



Standard  
*CARPETS*

HOSPITALITY  
CATALOG



# ABOUT HOSPITALITY

Carpets from Standard Carpets are of a very high and certified quality and therefore a good investment when it comes to durability and maintenance. They last for years and will bring guests a comfortable and pleasant impression of the hotel room even after many guests have stayed there. Carpets also impact the indoor climate, minimising dust particles in the air. Moreover, a good quality carpet emits no volatile organic compounds (VOCs).

Standard Carpets have great range of hospitality products to inspire and create exceptional flooring. This category uses only solution dyed nylon which is the king of all fibers, naturally stain resistant and durable.

Let's show you the collections suitable for the hospitality sector:

## HOSPITALITY CARPETS

### LCL NYLON

- A.I.
- ADGIO
- ANALOG
- CAROLINA
- DELTA INN
- FERMO
- FLINDERS
- GEORGIA
- HYPNO DRAMA
- HYPNO-III
- HYPNO-V
- JUNIOR SWEET
- KARMA
- KEZBEGI
- LHASA
- MARAKESH
- MERGE
- OLD TOWN
- PASSAGE
- THREE-D





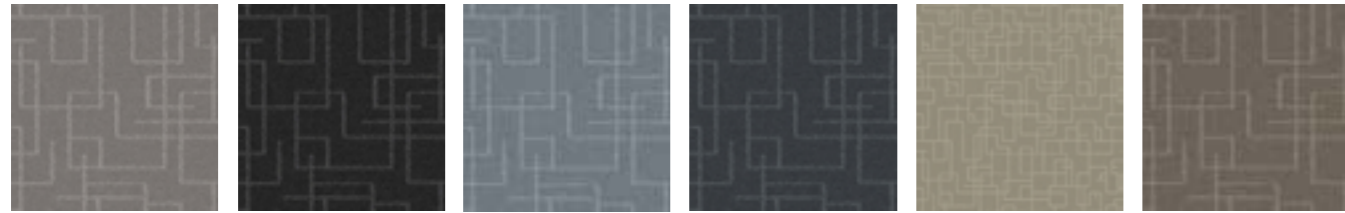
# SPECIFICATIONS

A . I .

CONSTRUCTION	Level Cut Loop
PILE FIBER COMPOSITION	100% Solution Dyed Nylon
YARN TYPE	Coiler
PILE WEIGHT	1300 g/m <sup>2</sup>
TOTAL WEIGHT	2300 g/m <sup>2</sup>
NUMBER OF TUFTS	189120/m <sup>2</sup>
TUFTING GAUGE	1/10"
PRIMARY BACKING	Woven
SECONDARY BACKING	Action Back or Ultra Jute or Action Fleece (Optional)
BROADLOOM WIDTH	3.66 m or 4.00 m
TOTAL HEIGHT	10.00 mm



AI LCL - 1230    AI LCL - 1238    AI LCL - 1240    AI LCL - 1245    AI LCL - 1246    AI LCL - 1270



AI LCL - 1271    AI LCL - 1272    AI LCL - 1273    AI LCL - 1276    AI LCL - 1293    AI LCL - 1295



AI LCL - 1320    AI LCL - 1323    AI LCL - 1342    AI LCL - 1343    AI LCL - 1346    AI LCL - 1354



AI LCL - 1358    AI LCL - 1360    AI LCL - 1365    AI LCL - 1375    AI LCL - 1377











## SPECIFICATIONS

### ADAGIO

CONSTRUCTION	Level Cut Loop
PILE FIBER COMPOSITION	100% Solution Dyed Nylon
YARN TYPE	Coiler
PILE WEIGHT	1300 g/m <sup>2</sup>
TOTAL WEIGHT	2300 g/m <sup>2</sup>
NUMBER OF TUFTS	189120/m <sup>2</sup>
TUFTING GAUGE	1/10"
PRIMARY BACKING	Woven
SECONDARY BACKING	Action Back
BROADLOOM WIDTH	3.66 m or 4.00 m
TOTAL HEIGHT	10.00 mm

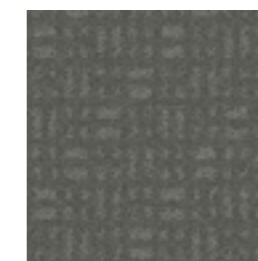
## COLOURLINE



Adagio-12733



Adagio-12744



Adagio-12766



Adagio-12777



ADAGIO-12788



ADAGIO-12911



ADAGIO-12933



Adagio-12955







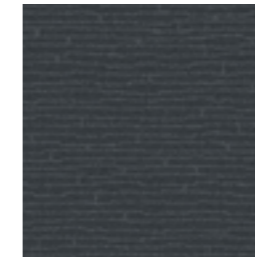
# SPECIFICATIONS

## ANALOG

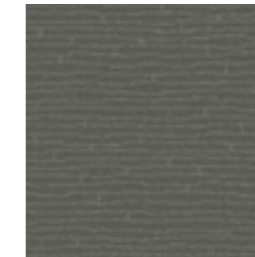
CONSTRUCTION	Level Cut Loop
PILE FIBER COMPOSITION	100% Solution Dyed Nylon
YARN TYPE	Coiler
PILE WEIGHT	1300 g/m <sup>2</sup>
TOTAL WEIGHT	2300 g/m <sup>2</sup>
NUMBER OF TUFTS	189120/m <sup>2</sup>
TUFTING GAUGE	1/10"
PRIMARY BACKING	Woven
SECONDARY BACKING	Action Back or Ultra Jute or Action Fleece (Optional)
BROADLOOM WIDTH	3.66 m or 4.00 m
TOTAL HEIGHT	10.00 mm



Analog-12733



Analog-12744



Analog-12766



Analog-12777



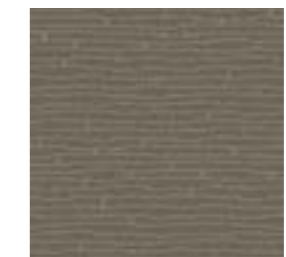
Analog-12788



Analog-12911



Analog-12933



Analog-12955







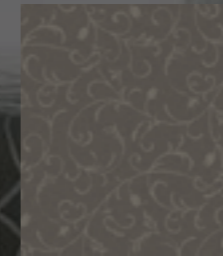
# SPECIFICATIONS

## CAROLINA

CONSTRUCTION	Level Cut Loop
PILE FIBER COMPOSITION	100% Solution Dyed Nylon
YARN TYPE	Coiler
PILE WEIGHT	1200 g/m <sup>2</sup>
TOTAL WEIGHT	2200 g/ m <sup>2</sup>
TUFT DENSITY	200940/ m <sup>2</sup>
TUFTING GAUGE	1/10"
PRIMARY BACKING	Woven
SECONDARY BACKING	Action Back or Ultra Jute or Action Fleece( Optional)
BROADLOOM WIDTH	3.66 m or 4.00 m
TOTAL HEIGHT	10.00 mm



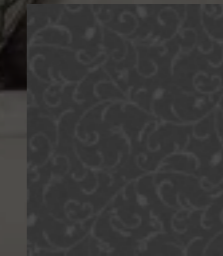
Carolina - 11370



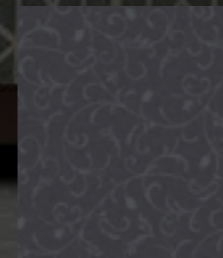
Carolina - 11371



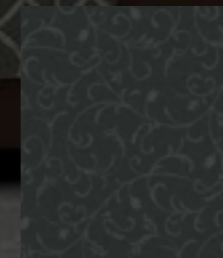
Carolina - 11372



Carolina - 11373



Carolina - 11374



Carolina - 11375



Carolina - 11376



Carolina - 11395





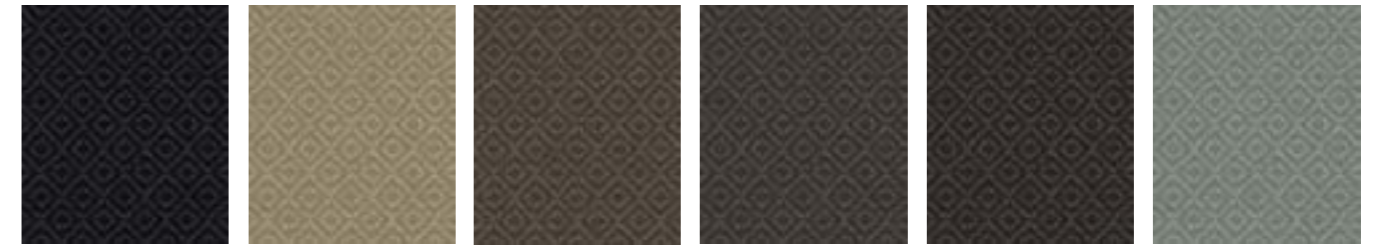


# SPECIFICATIONS

## FERMO

CONSTRUCTION	Level Cut Loop
PILE FIBER COMPOSITION	100% Solution Dyed Nylon
YARN TYPE	Coiler
PILE WEIGHT	1300 g/m <sup>2</sup>
TOTAL WEIGHT	2300 g/m <sup>2</sup>
NUMBER OF TUFTS	189120/m <sup>2</sup>
TUFTING GAUGE	1/10"
PRIMARY BACKING	Woven
SECONDARY BACKING	Action Back or Ultra Jute or Action Fleece (Optional)
BROADLOOM WIDTH	3.66 m or 4.00 m
TOTAL HEIGHT	10.00mm

# COLOURLINE



Fermo - 1230

Fermo - 1238

Fermo - 1240

Fermo - 1245

Fermo - 1246

Fermo - 1270



Fermo - 1271

Fermo - 1272

Fermo - 1273

Fermo - 1276

Fermo - 1293

Fermo - 1295











## SPECIFICATIONS

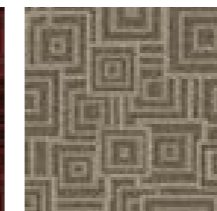
### DELTA INN

CONSTRUCTION	Scroll Tip Sheared
PILE FIBER COMPOSITION	100% Solution Dyed Nylon
YARN TYPE	BCF
PILE WEIGHT	800 g/m <sup>2</sup>
TOTAL WEIGHT	1800 g/m <sup>2</sup>
NUMBER OF TUFTS	256100/m <sup>2</sup>
TUFTING GAUGE	1/10"
PRIMARY BACKING	Woven
SECONDARY BACKING	Action Back or Ultra Jute or Action Fleece (Optional)
BROADLOOM WIDTH	3.66 m or 4.00 m
TOTAL HEIGHT	8.00 mm

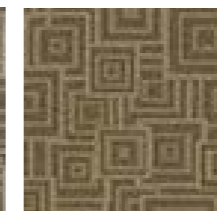
## COLOURLINE



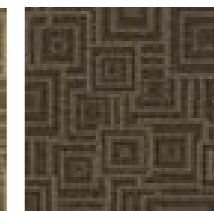
Delta Inn-728



Delta Inn-740



Delta Inn-743



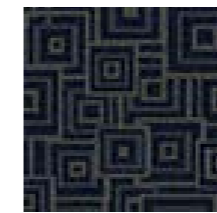
Delta Inn-745



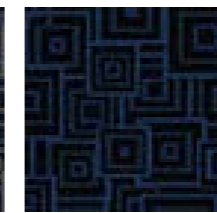
Delta Inn-747



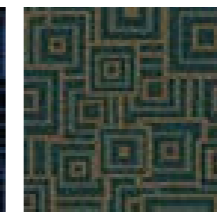
Delta Inn-748



Delta Inn-755



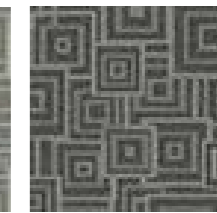
Delta Inn-757



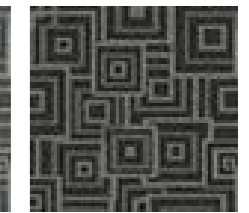
Delta Inn-766



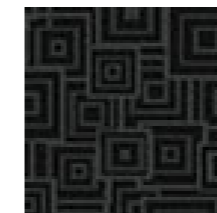
Delta Inn-770



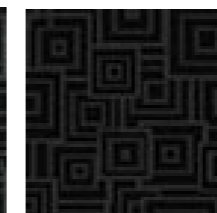
Delta Inn-773



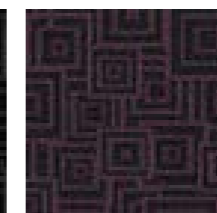
Delta Inn-775



Delta Inn-778



Delta Inn-779



Delta Inn-785



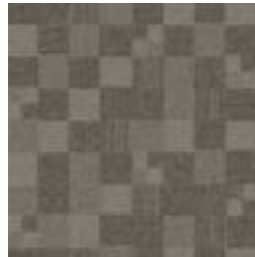




# SPECIFICATIONS

## GEORGIA

CONSTRUCTION	Level Cut Loop
PILE FIBER COMPOSITION	100% Solution Dyed Nylon
YARN TYPE	Coiler
PILE WEIGHT	1200 g/m <sup>2</sup>
TOTAL PILE WEIGHT	2200 g/m <sup>2</sup>
NUMBER OF TUFTS	200940/m <sup>2</sup>
TUFTING GAUGE	1/10"
PRIMARY BACKING	Woven
SECONDARY BACKING	Action Back or Ultra Jute or Action Fleece (Optional)
BROADLOOM WIDTH	3.66 m or 4.00 m
TOTAL HEIGHT	10.00mm



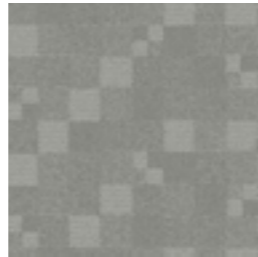
Georgia-12433



Georgia-12455



Georgia-12700



Georgia-12711



Georgia-12722



Georgia-12755



Georgia-12799



Georgia-12966









# SPECIFICATIONS

## HIPNO DRAMA

CONSTRUCTION	Level Cut Loop
PILE FIBER COMPOSITION	100% Solution Dyed Nylon
YARN TYPE	Coiler
PILE WEIGHT	1300 g/m <sup>2</sup>
TOTAL WEIGHT	2300 g/m <sup>2</sup>
NUMBER OF TUFTS	189120/m <sup>2</sup>
TUFTING GAUGE	1/10"
PRIMARY BACKING	Woven
SECONDARY BACKING	Action Back or Ultra Jute or Action Fleece (Optional)
BROADLOOM WIDTH	3.66 m or 4.00 m
TOTAL HEIGHT	10.00 mm

# COLOURLINE



Hypno-Drama-12733



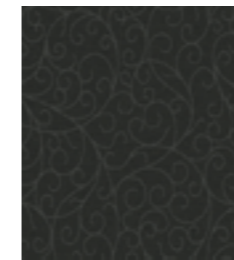
Hypno-Drama-12744



Hypno-Drama-12766



Hypno-Drama-12777



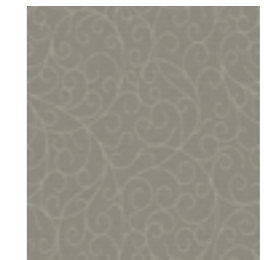
Hypno-Drama-12788



Hypno-Drama-12911



Hypno-Drama-12933



Hypno-Drama-12955









# SPECIFICATIONS

## HIPNO III

CONSTRUCTION	Level Cut Loop
PILE FIBER COMPOSITION	100% Solution Dyed Nylon
YARN TYPE	Coiler
PILE WEIGHT	1300 g/m <sup>2</sup>
TOTAL WEIGHT	2300 g/m <sup>2</sup>
NUMBER OF TUFTS	189120/m <sup>2</sup>
TUFTING GAUGE	1/10"
PRIMARY BACKING	Woven
SECONDARY BACKING	Action Back or Ultra Jute or Action Fleece (Optional)
BROADLOOM WIDTH	3.66 m or 4.00 m
TOTAL HEIGHT	10.00mm



Hypno III - 1230

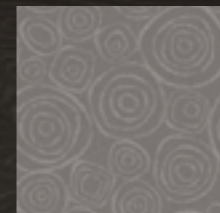
Hypno III - 1238

Hypno III - 1240

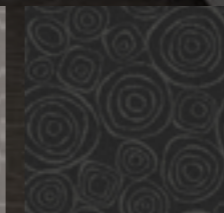
Hypno III - 1245

Hypno III - 1246

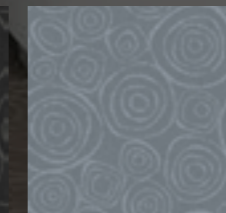
Hypno III - 1270



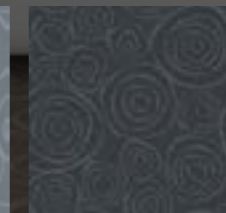
Hypno III - 1271



Hypno III - 1272



Hypno III - 1273



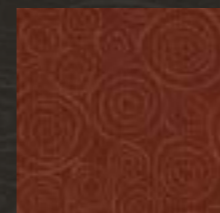
Hypno III - 1276



Hypno III - 1293



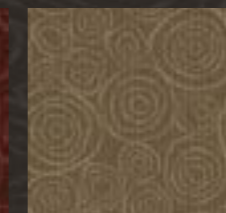
Hypno III - 1295



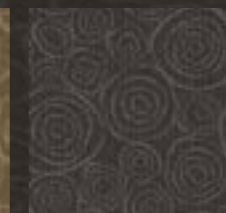
Hypno III - 1320



Hypno III - 1323



Hypno III - 1342



Hypno III - 1343



Hypno III - 1346



Hypno III - 1354



Hypno III - 1358



Hypno III - 1360



Hypno III - 1365



Hypno III - 1375



Hypno III - 1377





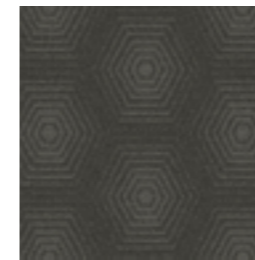




# SPECIFICATIONS

## HIPNO - V

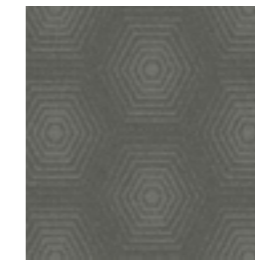
CONSTRUCTION	Level Cut Loop
PILE FIBER COMPOSITION	100% Solution Dyed Nylon
YARN TYPE	Coiler
PILE WEIGHT	1300 g/m <sup>2</sup>
TOTAL PILE WEIGHT	2300 g/m <sup>2</sup>
NUMBER OF TUFTS	189120/m <sup>2</sup>
TUFTING GAUGE	1/10"
PRIMARY BACKING	Woven
SECONDARY BACKING	Action Back or Ultra Jute or Action Fleece (Optional)
BROADLOOM WIDTH	3.66 m or 4.00 m
TOTAL HEIGHT	10.00mm



Hypno-V-12733



Hypno-V-12744



Hypno-V-12766



Hypno-V-12777



Hypno-V-12788



Hypno-V-12911



Hypno-V-12933



Hypno-V-12955



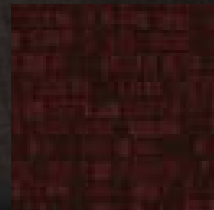




# SPECIFICATIONS

## JUNIOR SWEET

CONSTRUCTION	Scroll Tip Sheared
PILE FIBER COMPOSITION	100% Solution Dyed Nylon
YARN TYPE	BCF
PILE WEIGHT	800g/m <sup>2</sup>
TOTAL WEIGHT	1800 g/m <sup>2</sup>
NUMBER OF TUFTS	222310/m <sup>2</sup>
TUFTING GAUGE	1/12 "
PRIMARY BACKING	Woven
SECONDARY BACKING	Action Back or Ultra Jute or Action Fleece (Optional)
BROADLOOM WIDTH	3.66 m or 4.00 m
TOTAL HEIGHT	8.00 mm



Junior Sweet-728



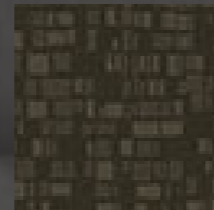
Junior Sweet-740



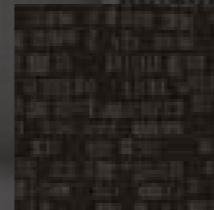
Junior Sweet-743



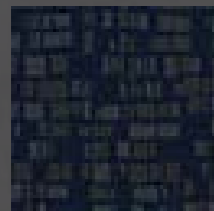
Junior Sweet-745



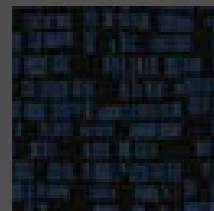
Junior Sweet-747



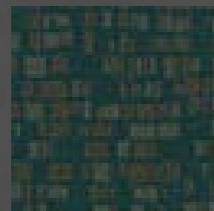
Junior Sweet-748



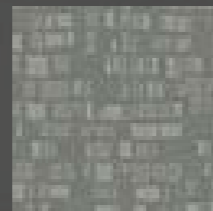
Junior Sweet-755



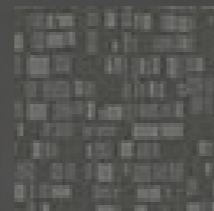
Junior Sweet-757



Junior Sweet-766



Junior Sweet-770



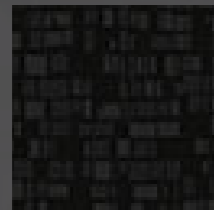
Junior Sweet-773



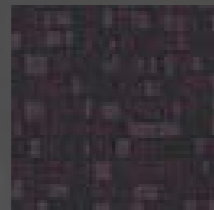
Junior Sweet-775



Junior Sweet-778



Junior Sweet-779



Junior Sweet-785









# SPECIFICATIONS

## KARMA

CONSTRUCTION	Level Cut Loop
PILE FIBER COMPOSITION	100% Solution Dyed Nylon
YARN TYPE	Coiler
PILE WEIGHT	1500g/m <sup>2</sup>
TOTAL WEIGHT	2500 g/m <sup>2</sup>
NUMBER OF TUFTS	236400/m <sup>2</sup>
TUFTING GAUGE	1/10 "
PRIMARY BACKING	Woven
SECONDARY BACKING	Action Back or Ultra Jute or Action Fleece (Optional)
BROADLOOM WIDTH	3.66 m or 4.00 m
TOTAL HEIGHT	10.00 mm



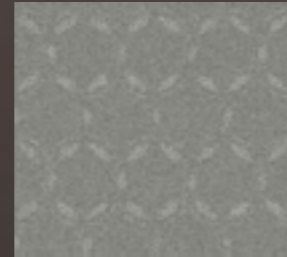
Karma-12433



Karma-12455



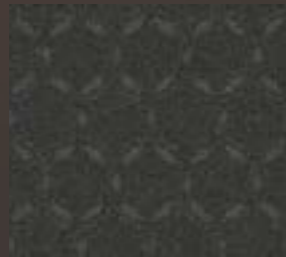
Karma-12700



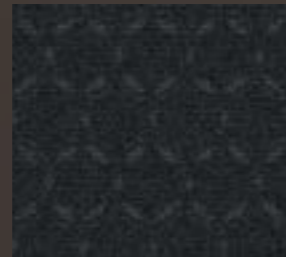
Karma-12711



Karma-12722



Karma-12755



Karma-12799



Karma-12966









# SPECIFICATIONS

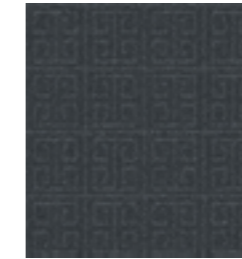
## KEZBEGI

CONSTRUCTION	Level Cut Loop
PILE FIBER COMPOSITION	100% Solution Dyed Nylon
YARN TYPE	Coiler
PILE WEIGHT	1300 g/m <sup>2</sup>
TOTAL PILE WEIGHT	2300 g/m <sup>2</sup>
NUMBER OF TUFTS	189120/m <sup>2</sup>
TUFTING GAUGE	1/10"
PRIMARY BACKING	Woven
SECONDARY BACKING	Action Back or Ultra Jute or Action Fleece (Optional)
BROADLOOM WIDTH	3.66 m or 4.00 m
TOTAL HEIGHT	10.00 mm

# COLOURLINE



Kezbegi-12733



Kezbegi-12744



Kezbegi-12766



Kezbegi-12777



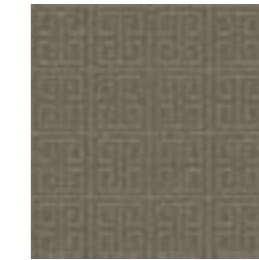
Kezbegi-12788



Kezbegi-12911



Kezbegi-12933



Kezbegi-12955









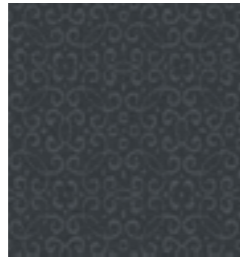
# SPECIFICATIONS

## LHASA

CONSTRUCTION	Level Cut Loop
PILE FIBER COMPOSITION	100% Solution Dyed Nylon
YARN TYPE	Coiler
PILE WEIGHT	1300 g/m <sup>2</sup>
TOTAL WEIGHT	2300 g/m <sup>2</sup>
NUMBER OF TUFTS	189120/m <sup>2</sup>
TUFTING GAUGE	1/10"
PRIMARY BACKING	Woven
SECONDARY BACKING	Action Back or Ultra Jute or Action Fleece (Optional)
BROADLOOM WIDTH	3.66 m or 4.00 m
TOTAL HEIGHT	10.00 mm



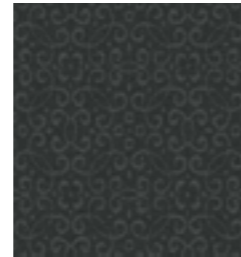
Lhasa-12733



Lhasa-12744



Lhasa-12766



Lhasa-12777



Lhasa-12788



Lhasa-12911



Lhasa-12933



Lhasa-12955











# SPECIFICATIONS

## MARAKESH

CONSTRUCTION	Level Cut Loop
PILE FIBER COMPOSITION	100% Solution Dyed Nylon
YARN TYPE	Coiler
PILE WEIGHT	1300 g/m <sup>2</sup>
TOTAL WEIGHT	2300 g/m <sup>2</sup>
NUMBER OF TUFTS	189120/m <sup>2</sup>
TUFTING GAUGE	1/10"
PRIMARY BACKING	Woven
SECONDARY BACKING	Action Back or Ultra Jute or Action Fleece (Optional)
BROADLOOM WIDTH	3.66 m or 4.00 m
TOTAL HEIGHT	10.00 mm



Marakesh - 1230



Marakesh - 1238



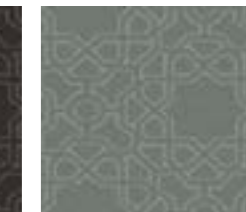
Marakesh - 1240



Marakesh - 1245



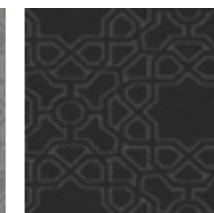
Marakesh - 1246



Marakesh - 1270



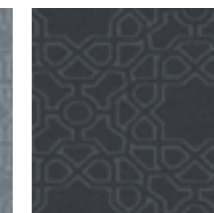
Marakesh - 1271



Marakesh - 1272



Marakesh - 1273



Marakesh - 1276



Marakesh - 1293



Marakesh - 1295



Marakesh - 1320



Marakesh - 1323



Marakesh - 1342



Marakesh - 1343



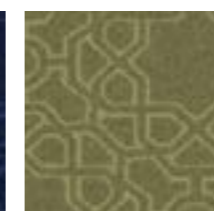
Marakesh - 1346



Marakesh - 1354



Marakesh - 1358



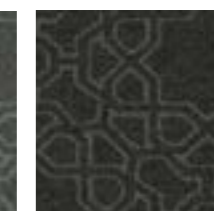
Marakesh - 1360



Marakesh - 1365



Marakesh - 1375



Marakesh - 1377





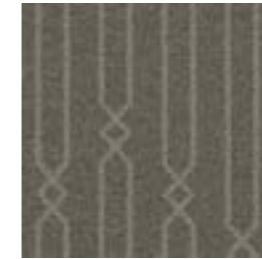


# SPECIFICATIONS

## MERGE

CONSTRUCTION	Level Cut Loop
PILE FIBER COMPOSITION	100% Solution Dyed Nylon
YARN TYPE	Coiler
PILE WEIGHT	1300 g/m <sup>2</sup>
TOTAL WEIGHT	2300 g/m <sup>2</sup>
NUMBER OF TUFTS	189120/m <sup>2</sup>
TUFTING GAUGE	1/10"
PRIMARY BACKING	Woven
SECONDARY BACKING	Action Back or Ultra Jute or Action Fleece (Optional)
BROADLOOM WIDTH	3.66 m or 4.00 m
TOTAL HEIGHT	10.00 mm

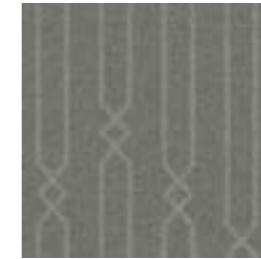
# COLOURLINE



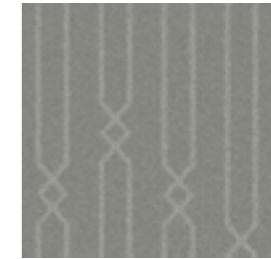
Merg-12433



Merg-12455



Merg-12700



Merg-12711



MERGE-12722



MERGE-12755



MERGE-12799



Merg-12966









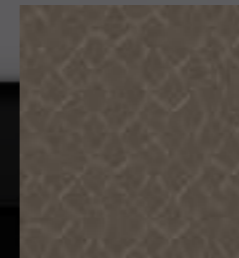
# SPECIFICATIONS

## OLD TOWN

CONSTRUCTION	Level Cut Loop
PILE FIBER COMPOSITION	100% Solution Dyed Nylon
YARN TYPE	Coiler
PILE WEIGHT	1300 g/m <sup>2</sup>
TOTAL WEIGHT	2300 g/m <sup>2</sup>
NUMBER OF TUFTS	189120/m <sup>2</sup>
TUFTING GAUGE	1/10"
PRIMARY BACKING	Woven
SECONDARY BACKING	Action Back or Ultra Jute or Action Fleece (Optional)
BROADLOOM WIDTH	3.66 m or 4.00 m
TOTAL HEIGHT	10.00 mm



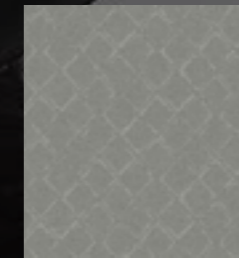
Old-Town-12433



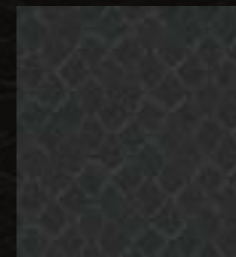
Old-Town-12455



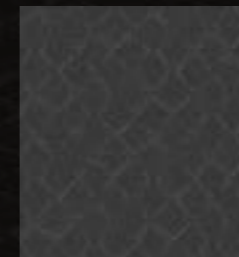
Old-Town-12700



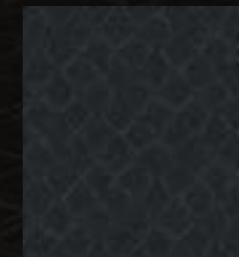
Old-Town-12711



Old-Town-12722



Old-Town-12755



Old-Town-12799



Old-Town-12966



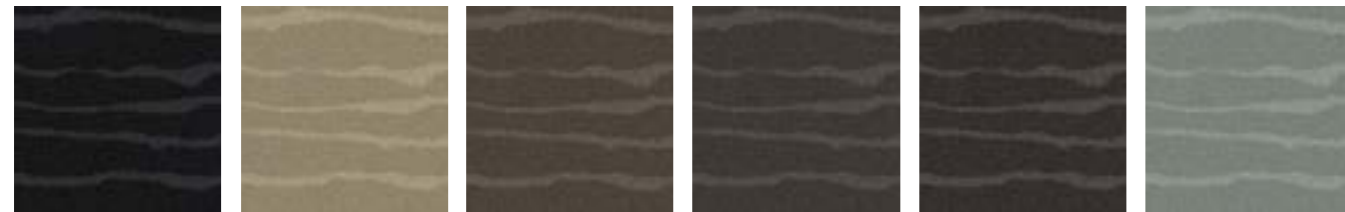




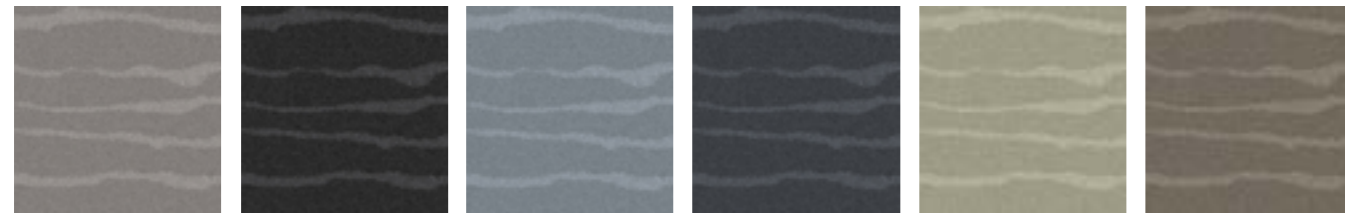
# SPECIFICATIONS

## PASSAGE

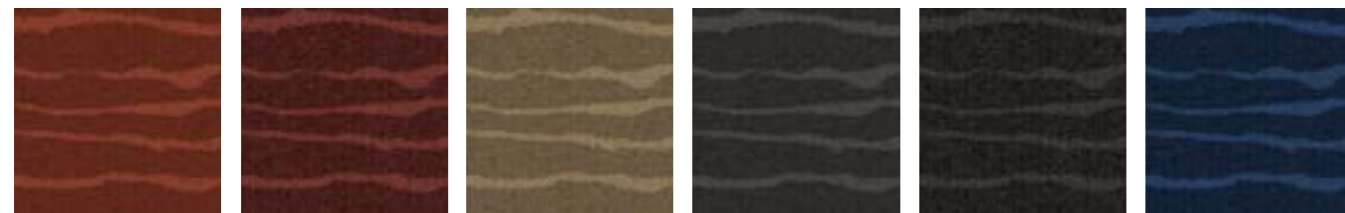
CONSTRUCTION	Level Cut Loop
PILE FIBER COMPOSITION	100% Solution Dyed Nylon
YARN TYPE	Coiler
PILE WEIGHT	1300 g/m <sup>2</sup>
TOTAL WEIGHT	2300 g/m <sup>2</sup>
NUMBER OF TUFTS	189120/m <sup>2</sup>
TUFTING GAUGE	1/10"
PRIMARY BACKING	Woven
SECONDARY BACKING	Action Back or Ultra Jute or Action Fleece (Optional)
BROADLOOM WIDTH	3.66 m or 4.00 m
TOTAL HEIGHT	10.00mm



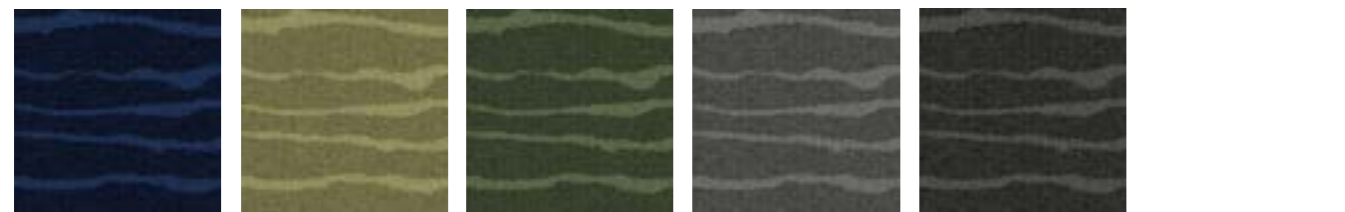
Passage - 1230    Passage - 1238    Passage - 1240    Passage - 1245    Passage - 1246    Passage - 1270



Passage - 1271    Passage - 1272    Passage - 1273    Passage - 1276    Passage - 1293    Passage - 1295



Passage - 1320    Passage - 1323    Passage - 1342    Passage - 1343    Passage - 1346    Passage - 1354



Passage - 1358    Passage - 1360    Passage - 1365    Passage - 1375    Passage - 1377









# SPECIFICATIONS

## THREE-D

CONSTRUCTION	Level Cut Loop
PILE FIBER COMPOSITION	100% Solution Dyed Nylon
YARN TYPE	Coiler
PILE WEIGHT	1300 g/m <sup>2</sup>
TOTAL WEIGHT	2300 g/m <sup>2</sup>
NUMBER OF TUFTS	189120/m <sup>2</sup>
TUFTING GAUGE	1/10"
PRIMARY BACKING	Woven
SECONDARY BACKING	Action Back or Ultra Jute or Action Fleece (Optional)
BROADLOOM WIDTH	3.66 m or 4.00 m
TOTAL HEIGHT	10.00 mm

# COLOURLINE



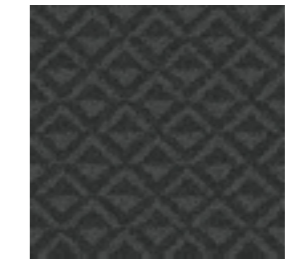
Three-D-12733



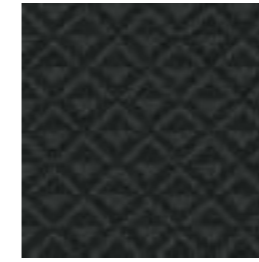
Three-D-12744



Three-D-12766



Three-D-12777



Three-D-12788



Three-D-12911



Three-D-12933



Three-D-12955











## CERTIFICATIONS



### ISO

Standard Carpets complies with the ISO 9001:2015, the OHSAS 45001:2018, and the ISO 45001:2018 environmental management systems. This minimizes the negative effect of our operations on the environment and adheres to environmental rules and regulations.



### US GREEN BUILDING COUNCIL

Standard Carpets is a proud member of USGBC, a non-profit organization that promotes sustainability in buildings design, construction, and operation.



### BREEAM

BREEAM (Building Research Establishment Environmental Assessment Method) is one of the best environmental assessment and rating systems for buildings, and enables developers and designers to establish that their projects are environmentally friendly.



### CRI GREEN LABEL PROGRAM

All heavy contract carpet tiles manufactured by Standard Carpets are certified by the Carpet and Rug Institute's Green Label Plus program, which supports higher standards of indoor air quality.



# GET IN TOUCH

Standard Carpets Ind. LLC.

PO BOX 490014,  
Plot No. 5315801  
Dubai Industrial Park,  
Dubai, U.A.E.

Tel: (971) 4 554 7137  
Email : [info@standardcarpets.com](mailto:info@standardcarpets.com)







Standard  
*CARPETS*



[www.dellco.ru](http://www.dellco.ru)