

CAMELEON CONCEPT

CUSTOM PRINTED CONTRACT CARPETS

By Lamo



CAMELEON CONCEPT

NL

Exclusief bedrukt tapijt: textiele vloerbedekking met een persoonlijk ontwerp

Met het Cameleon Concept worden tapijten volgens klantspecificatie gemaakt. Aanpassingen van uw dessin aan uw kleurwensen, zorgen voor een uniek tapijt, perfect passend in uw interieur.

Wat het dessin betreft, kunnen we werken met uw eigen ontwerp of kunnen we u helpen bij het ontwikkelen van nieuwe ideeën om uw wensen te realiseren.

Ons design team heeft ook een 'design gallery' waar u de laatste creaties kunt bekijken. Een gedurfde en eigentijdse collectie van dessins die u kunnen inspireren en laten zien wat er mogelijk is voor uw textiele vloerbedekking.

U kan uw eigen kleuren kiezen voor uw dessin. Indien mogelijk, krijgen we hiervoor graag kleurstalen. U kunt ook de kleuren kiezen uit een van de volgende kleursystemen: NCS, Pantone, RAL. Mocht u nog vragen hebben i.v.m. kleuren, dan kunt u altijd contact opnemen met ons team van ontwerpers. Zij helpen u graag verder.

U heeft de keuze uit vier contractkwaliteiten, vervaardigd uit resiliënte tapijtvezels met uitzonderlijk goede eigenschappen, zelfs voor de meest veeleisende locaties:

- 710 g/m² (Brezina)
- 970 g/m² (Zenith)
- 1000 g/m² (Zen)
- 1200 g/m² (Zen Elite)

Een geweven, synthetische en brandvertragende kwaliteitsrug (SB/FS) zorgt voor een lange levensduur van uw tapijt. Tegen een meerprijs, kan ook voor een brandvertragende polyester viltrug (FBP/FS) gekozen worden.

De rolbreedte is 400 cm maar, in praktijk, heeft de rol een effectieve breedte van ongeveer 390 cm bij het leggen van meerdere banen naast elkaar. Bij het leggen van 3 banen, betekent dit een effectieve bruikbare breedte van 1.170 cm.

F

Moquette imprimée exclusive: revêtement de sol textile personnalisé.

Avec le Cameleon Concept, les moquettes sont fabriquées selon les souhaits du client. Adaptation de votre dessin et de vos couleurs pour vous fournir une moquette unique qui conviendra parfaitement à votre intérieur.

En ce qui concerne le dessin, nous pouvons travailler sur votre propre conception ou nous pouvons vous aider à développer de nouvelles idées afin de concrétiser vos rêves.

Notre équipe de conception a également une "galerie design" où vous pouvez consulter leurs dernières créations. Une collection audacieuse et contemporaine de dessins dont vous pouvez vous inspirer.

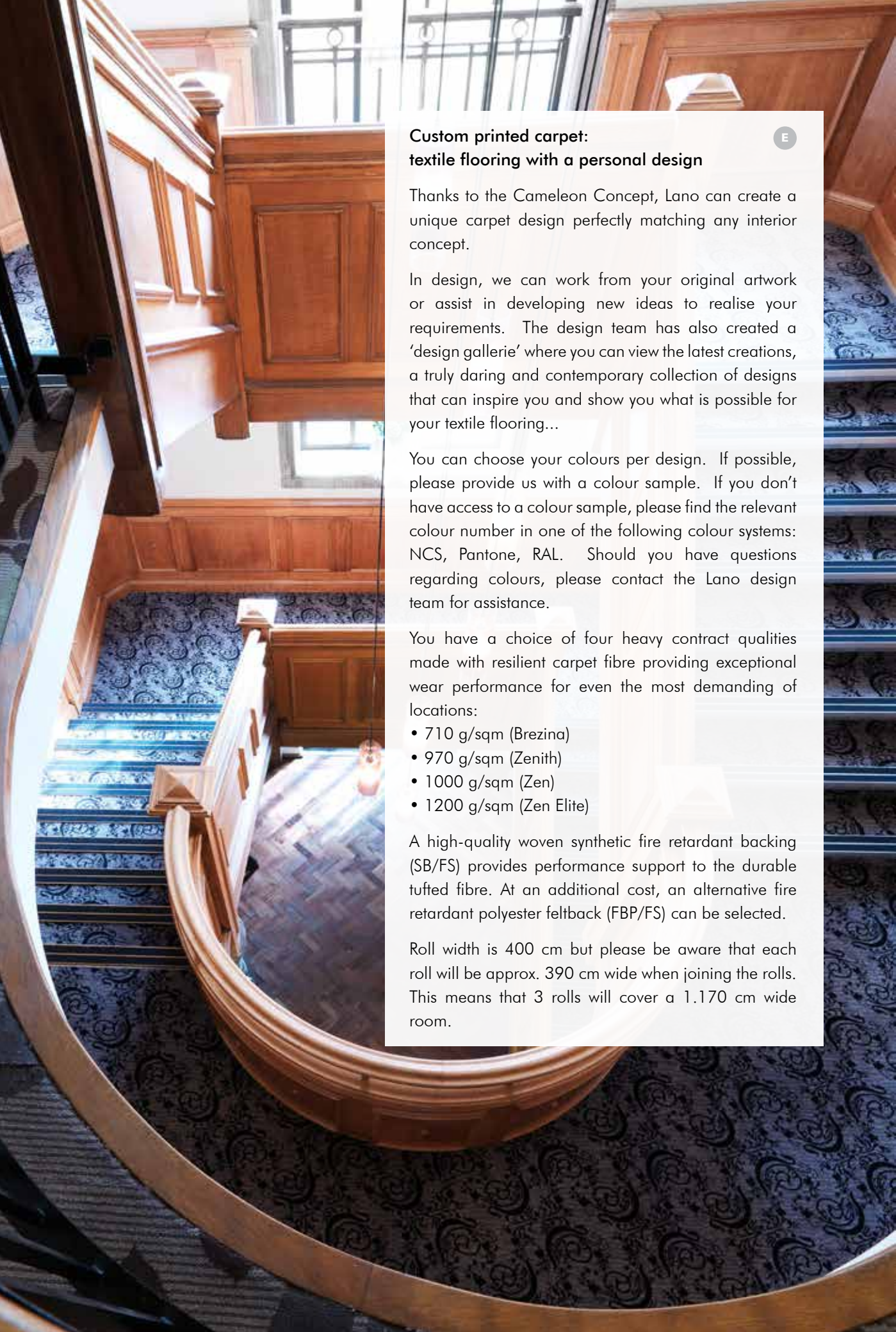
Vous pouvez choisir vos propres couleurs et nous nous acceptons volontiers vos échantillons. Vous pouvez également choisir parmi les systèmes suivants: NCS, Pantone, RAL. Si toutefois des questions subsistent par rapport aux couleurs, nos designers se feront un plaisir de vous aider.

Vous avez le choix entre 4 qualités, faites de fibres résilientes, aux propriétés exceptionnelles mêmes dans les conditions les plus exigeantes:

- 710 g/m² (Brezina)
- 970 g/m² (Zenith)
- 1000 g/m² (Zen)
- 1200 g/m² (Zen Elite)

Un dossier tissé, synthétique et ralentissant la propagation du feu, donne une longue durée de vie à vos moquettes (SB/FS). Moyennant un supplément, vous pouvez également choisir un dossier PES feutre ralentissant également la propagation du feu (FBP/FS).

La largeur des rouleaux est de 4 mètres, mais dans la pratique, ils ont une largeur effective de 3,90 mètres lorsque vous les posez côte à côte. Cela signifie que par la pose de 3 rouleaux, vous avez une largeur effective de 11,70 mètres.



**Custom printed carpet:
textile flooring with a personal design**

E

Thanks to the Cameleon Concept, Lano can create a unique carpet design perfectly matching any interior concept.

In design, we can work from your original artwork or assist in developing new ideas to realise your requirements. The design team has also created a 'design gallerie' where you can view the latest creations, a truly daring and contemporary collection of designs that can inspire you and show you what is possible for your textile flooring...

You can choose your colours per design. If possible, please provide us with a colour sample. If you don't have access to a colour sample, please find the relevant colour number in one of the following colour systems: NCS, Pantone, RAL. Should you have questions regarding colours, please contact the Lano design team for assistance.

You have a choice of four heavy contract qualities made with resilient carpet fibre providing exceptional wear performance for even the most demanding of locations:

- 710 g/sqm (Brezina)
- 970 g/sqm (Zenith)
- 1000 g/sqm (Zen)
- 1200 g/sqm (Zen Elite)

A high-quality woven synthetic fire retardant backing (SB/FS) provides performance support to the durable tufted fibre. At an additional cost, an alternative fire retardant polyester feltback (FBP/FS) can be selected.

Roll width is 400 cm but please be aware that each roll will be approx. 390 cm wide when joining the rolls. This means that 3 rolls will cover a 1.170 cm wide room.



**D Individuell bedruckter Teppichboden:
textiler Bodenbelag mit individuellem Dessin**

Mit dem Cameleon Concept ist Lano in der Lage, einzigartige Teppichdessins zu entwerfen, die in jedes Interieur Konzept passen.

Was das Dessin betrifft, können wir mit Ihrem eigenen Entwurf arbeiten oder bei der Entwicklung neuer Ideen assistieren, um Ihre Wünsche zu realisieren. Unser Designer Team hat eine Design - Galerie erstellt, in der Sie die neuesten Creationen einer gewagten und zeitlosen Dessinkollektion finden, die Sie inspirieren kann und die Möglichkeiten für Ihren Bodenbelag darstellt.

Sie können die Farben per Dessin wählen. Nach Möglichkeit besorgen Sie uns ein original Farbmuster. Falls dies nicht möglich ist, können Sie die Farbe aus einer der folgenden Farbsysteme bestimmen: NCS, Pantone, RAL. Für eventuelle Fragen bzgl. der Farben können Sie jederzeit das Lano Designer Team kontaktieren. Wir werden Ihnen gerne behilflich sein.

Sie haben die Wahl aus vier Objektqualitäten, produziert aus resilienten Teppichfasern mit aussergewöhnlich guten Eigenschaften, die den höchsten Qualitätsanforderungen entsprechen:

- 710 g/m² (Brezina)
- 970 g/m² (Zenith)
- 1000 g/m² (Zen)
- 1200 g/m² (Zen Elite)

Ein gewebter, synthetischer und brandhemmender Qualitätsrücken (SB/FS) sorgt zusätzlich für eine lange Lebensdauer des Belages. Gegen Mehrpreis kann auch ein brandhemmender, Polyestervliesrücken gewählt werden (FBP/FS).

Die Warenbreite beträgt 400cm. Bitte beachten Sie jedoch, dass die Ware in der Praxis eine Nutzbreite von ca. 390cm hat bei Verlegung mehrerer Bahnen nebeneinander. Bei z.B. drei Bahnen entspräche dies demnach einer effektiven Nutzbreite von 1.170 cm.







CHR 2571
R: ▶ 960 mm ▲ 970 mm



CHR 2821
R: ▶ 980 mm ▲ 840 mm



CHR 2787
R: ▶ 975 mm ▲ 916 mm





CHR 2878

R: ▶ 487 mm ▲ 477 mm



1 2



CHR 2558

R: ▶ 1300 mm ▲ 1300 mm



1 2

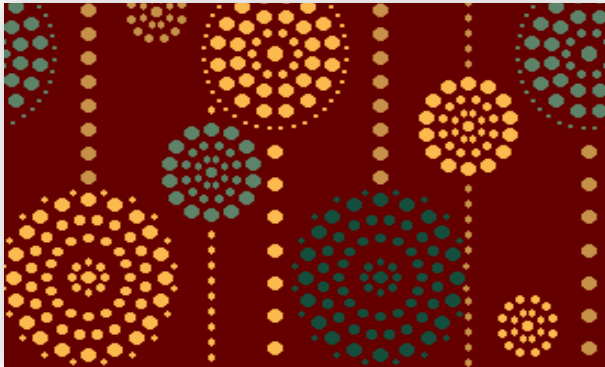


CHR 2964

R: ▶ 650 mm ▲ 777 mm



1 2



CHR 2938

R: ▶ 975 mm ▲ 1200 mm



1 2 3 4 5



CHR 2692

R: ▶ 975 mm ▲ 933 mm



1 2

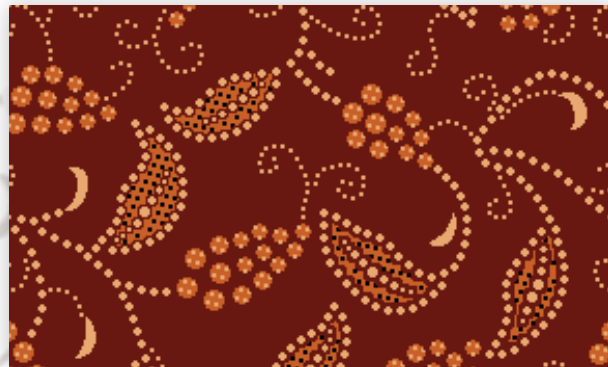


CHR 2600

R: ▶ 480 mm ▲ 480 mm



1 2

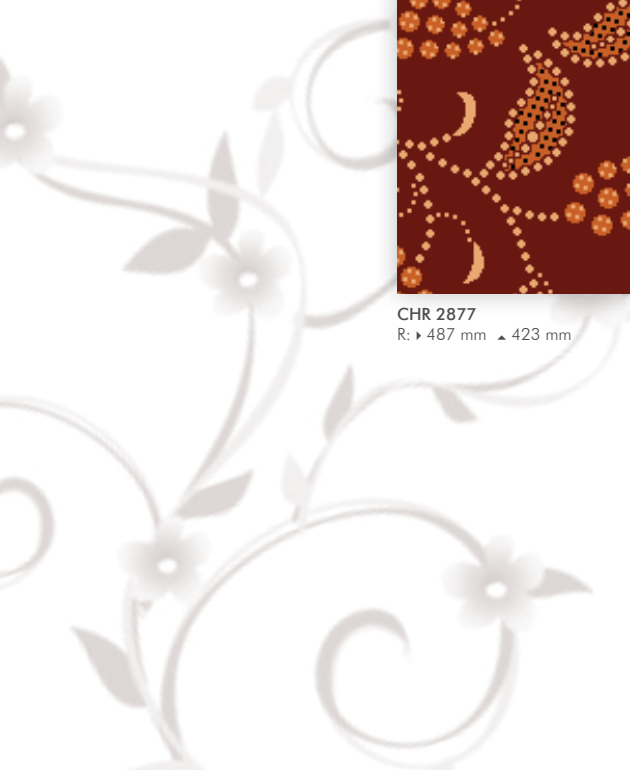


CHR 2877

R: ▶ 487 mm ▲ 423 mm

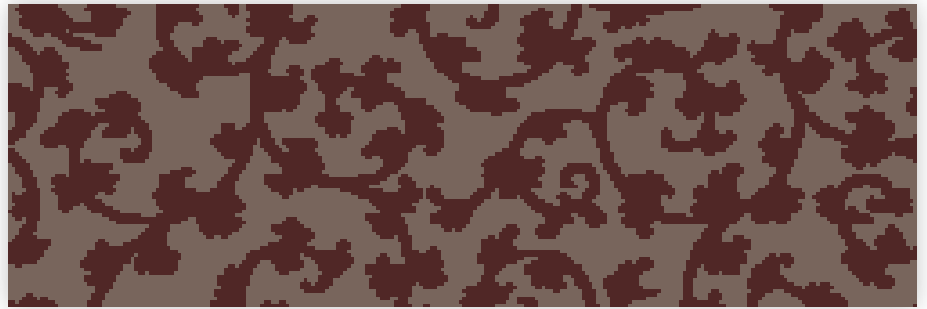


1 2 3 4





CHR 2601
R: ▶ 420 mm ▲ 256 mm



CHR 2544
R: ▶ 420 mm ▲ 420 mm



CHR 2977
R: ▶ 650 mm ▲ 650 mm



CHR 2978
R: ▶ 973 mm ▲ 487 mm



CHR 2956
R: ▶ 973 mm ▲ 923 mm

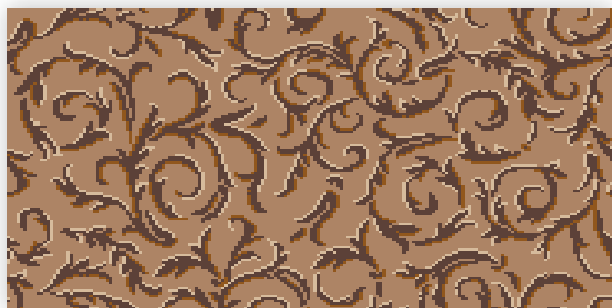








CHR 2765
R: ▶ 975 mm ▲ 975 mm



CHR 2764
R: ▶ 306 mm ▲ 390 mm

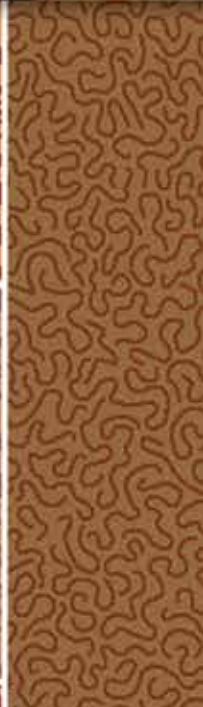


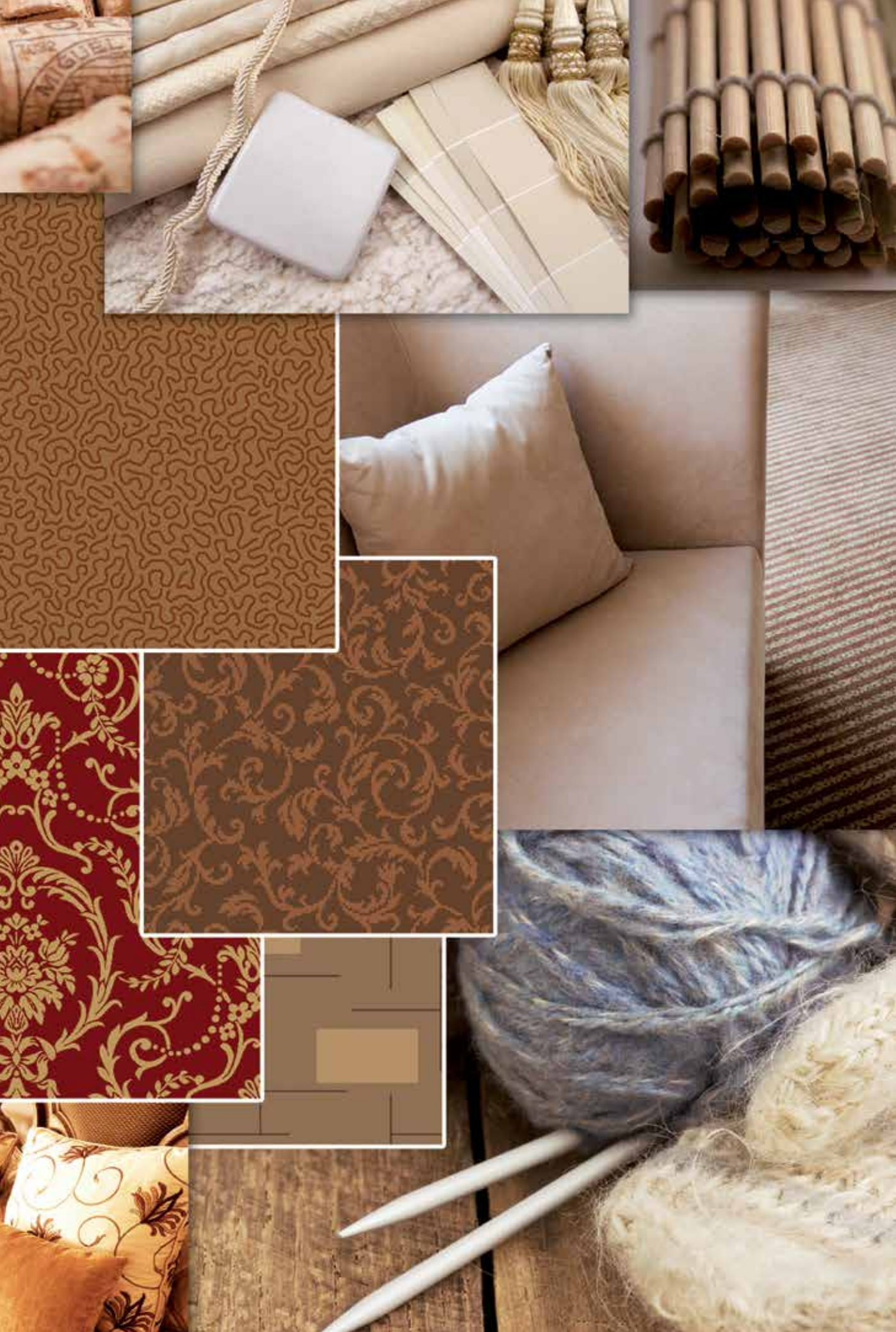
CHR 2752
R: ▶ 975 mm ▲ 940 mm



CHR 2667
R: ▶ 1300 mm ▲ 650 mm

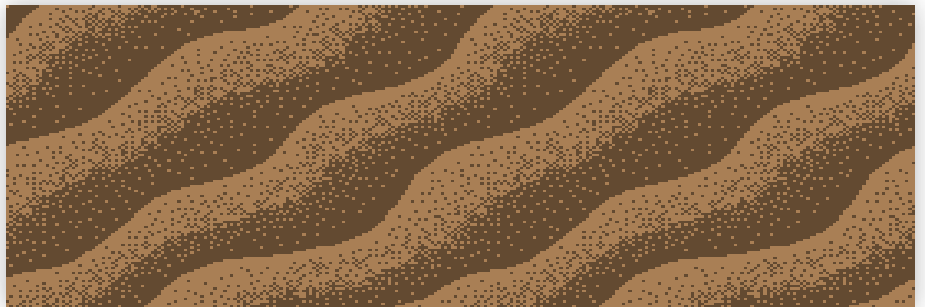








CHR 2649
R: ▶ 487 mm ▲ 240 mm



CHR 2760
R: ▶ 975 mm ▲ 975 mm



CHR 2647
R: ▶ 973 mm ▲ 1277 mm



CHR 2646
R: ▶ 973 mm ▲ 973 mm

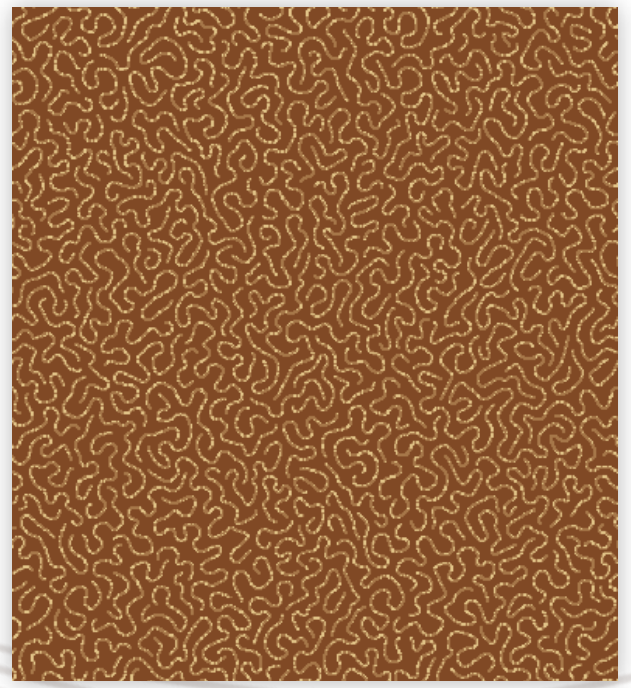




CHR 2943
R: ▶ 243 mm ▲ 165 mm



1 2



CHR 2509
R: ▶ 650 mm ▲ 743 mm



1 2 3



CHR 2991
R: ▶ 650 mm ▲ 863 mm 1 2 3



CHR 2875
R: ▶ 975 mm ▲ 840 mm 1 2 3



CHR 2968
R: ▶ 975 mm ▲ 975 mm 1 2



CHR 2737
R: ▶ 975 mm ▲ 975 mm 1 2



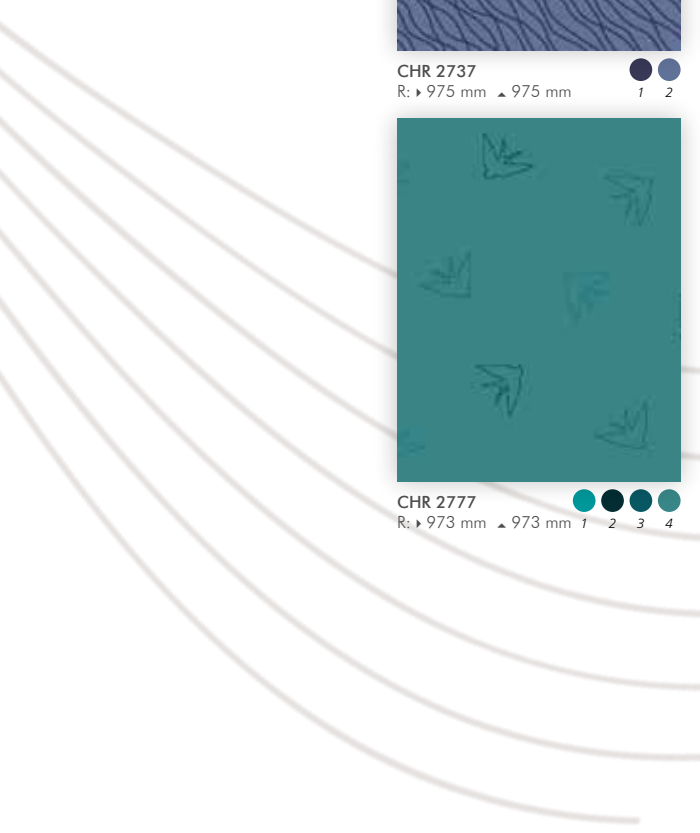
CHR 2741
R: ▶ 1950 mm ▲ 1810 mm 1 2 3



CHR 3025
R: ▶ 1300 mm ▲ 693 mm 1 2 3



CHR 2777
R: ▶ 973 mm ▲ 973 mm 1 2 3 4





CHR 2990
R: ▶ 780 mm ▲ 863 mm 1 2 3

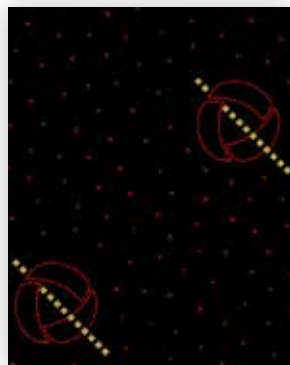


CHR 2998
R: ▶ 853 mm ▲ 910 mm 1 2 3

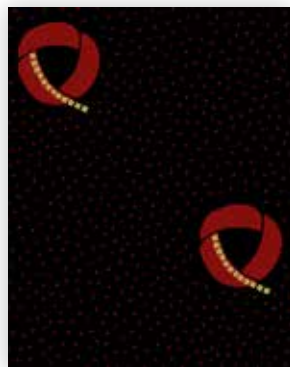


CHR 2784
R: ▶ 975 mm ▲ 975 mm 1 2





CHR 2918
R: ▶ 973 mm ▲ 973 mm 1 2 3



CHR 2911
R: ▶ 973 mm ▲ 973 mm 1 2 3





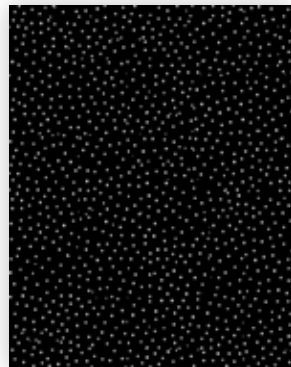
CHR 2766
R: ▶ 2193 mm ▲ 2160 mm 1 2 3



CHR 3111
R: ▶ 500 mm ▲ 500 mm 1 2



CHR 3078
R: ▶ 975 mm ▲ 975 mm 1 2 3



CHR 3066
R: ▶ 975 mm ▲ 975 mm 1 2



CHR 3031
R: ▶ 960 mm ▲ 960 mm 1 2

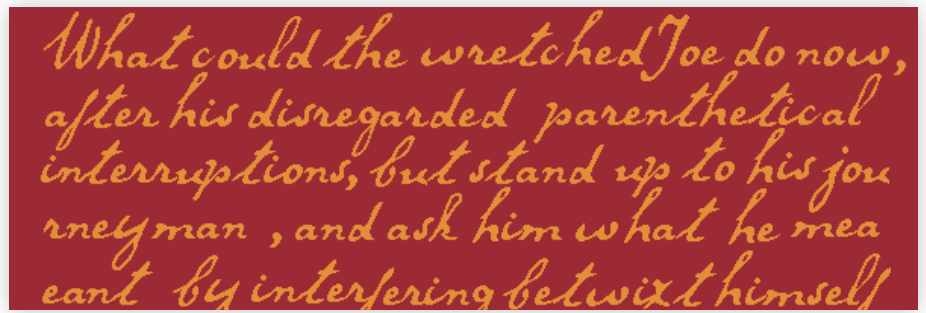


CHR 2936
R: ▶ 973 mm ▲ 973 mm 1 2





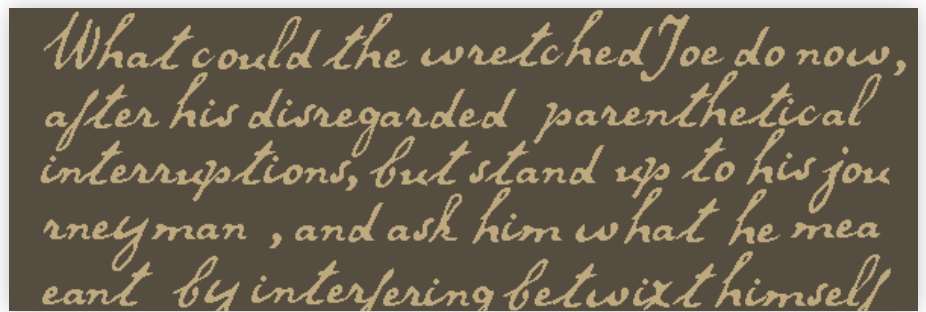
CHR 3028
R: ▶ 650 mm ▲ 638 mm



CHR 2552
R: ▶ 1000 mm ▲ 500 mm



CHR 3029
R: ▶ 3900 mm ▲ 2913 mm



CHR 2552
R: ▶ 1000 mm ▲ 500 mm





CHR 3084C
R: ▶ 487 mm ▲ 330 mm



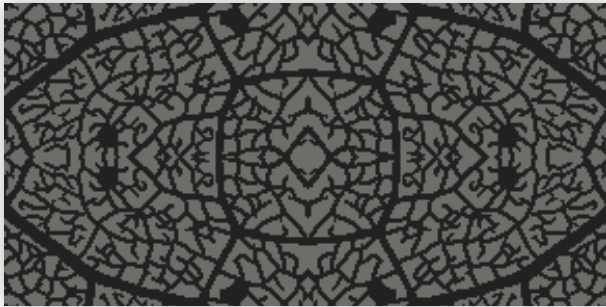
1 2



CHR 3040
R: ▶ 780 mm ▲ 1033 mm



1 2 3



CHR 2822
R: ▶ 486 mm ▲ 380 mm



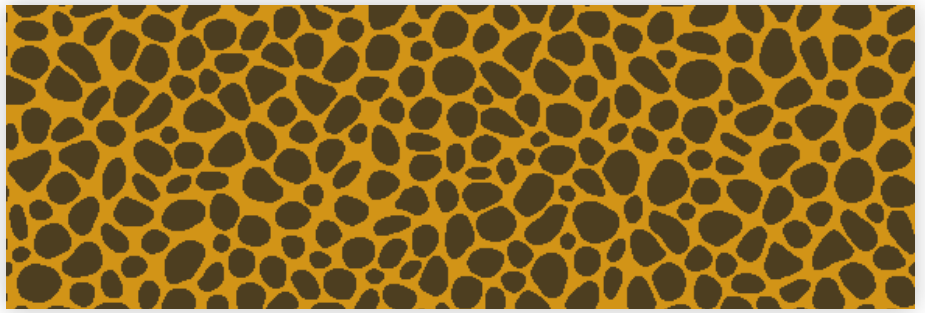
1 2



CHR 2572
R: ▶ 320 mm ▲ 320 mm



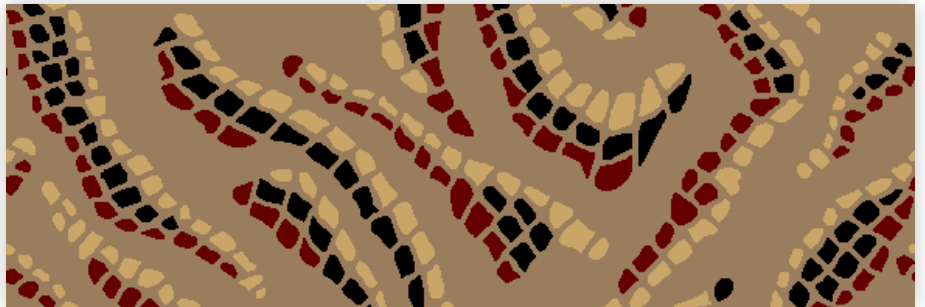
1 2 3 4



CHR 2529
R: ▶ 973 mm ▲ 973 mm



CHR 3012
R: ▶ 975 mm ▲ 875 mm



CHR 2756
R: ▶ 975 mm ▲ 975 mm



CHR 2529
R: ▶ 973 mm ▲ 973 mm

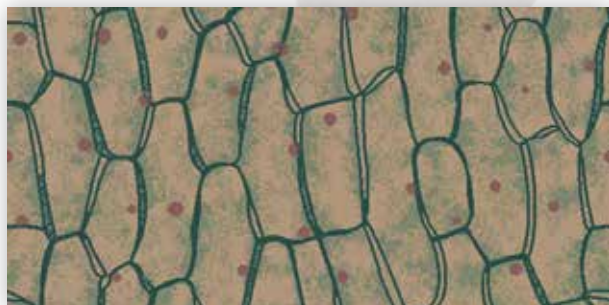


CHR 3012
R: ▶ 975 mm ▲ 875 mm

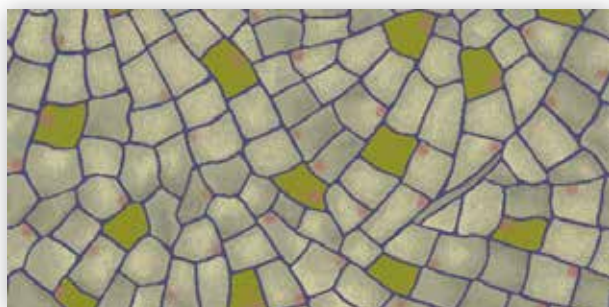
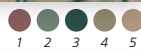




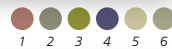




CHR 3104
R: ▶ 973 mm ▲ 973 mm



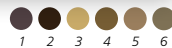
CHR 3105
R: ▶ 975 mm ▲ 975 mm



CHR 2970
R: ▶ 977 mm ▲ 977 mm



CHR 2518
R: ▶ 660 mm ▲ 655 mm









CHR 2541
R: ▶ 975 mm ▲ 403 mm



CHR 3008
R: ▶ 650 mm ▲ 558 mm



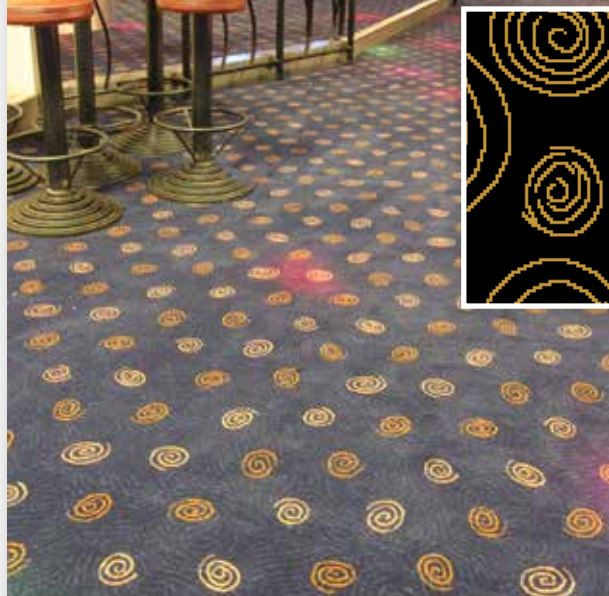
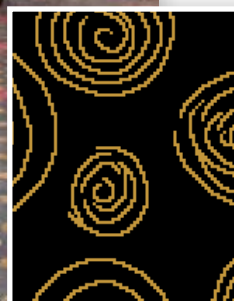
CHR 2540
R: ▶ 973 mm ▲ 973 mm



CHR 3007
R: ▶ 650 mm ▲ 558 mm

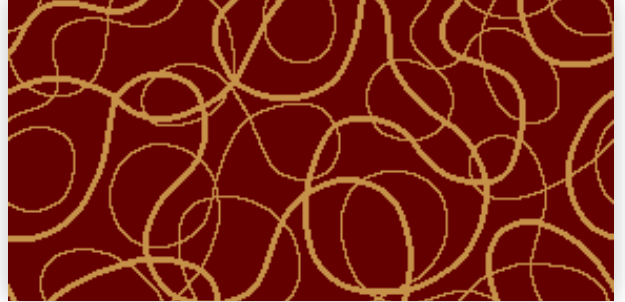


CHR 2539
R: ▶ 780 mm ▲ 463 mm





CHR 2944
R: ▶ 975 mm ▲ 975 mm



CHR 2948
R: ▶ 480 mm ▲ 450 mm



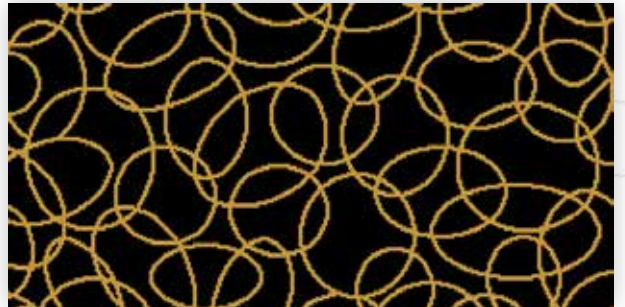
CHR 2942
R: ▶ 973 mm ▲ 973 mm



CHR 2666
R: ▶ 1950 mm ▲ 1666 mm



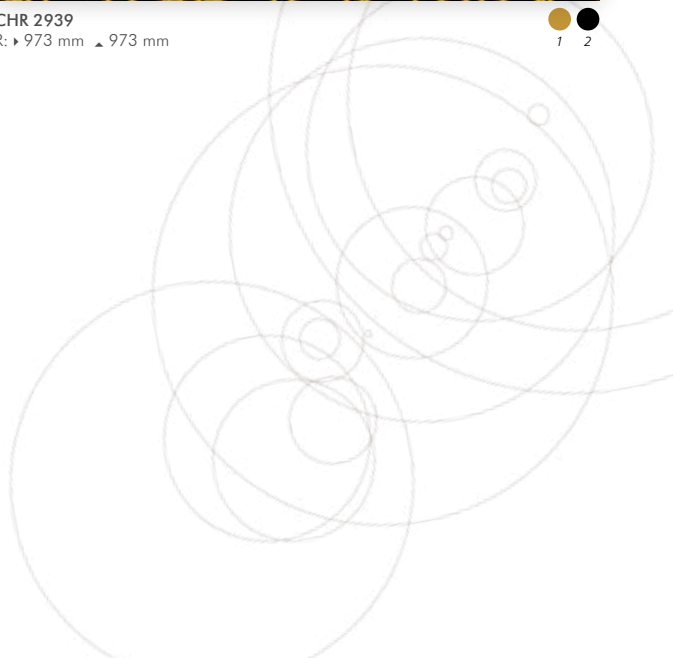
CHR 2941
R: ▶ 973 mm ▲ 973 mm



CHR 2939
R: ▶ 973 mm ▲ 973 mm



CHR 2940
R: ▶ 973 mm ▲ 973 mm





CHR 2695
R: ▶ 1300 mm ▲ 1300 mm



CHR 2699
R: ▶ 617 mm ▲ 590 mm



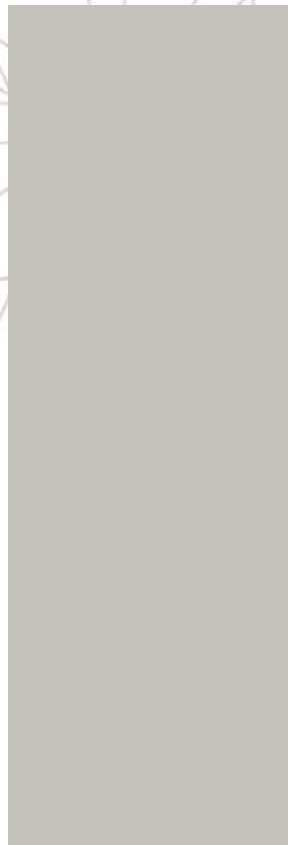
CHR 2698
R: ▶ 460 mm ▲ 590 mm



CHR 2636
R: ▶ 973 mm ▲ 973 mm



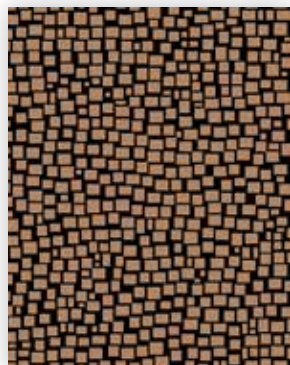
CHR 2641
R: ▶ 973 mm ▲ 973 mm



CHR 2700
R: ▶ 460 mm ▲ 590 mm





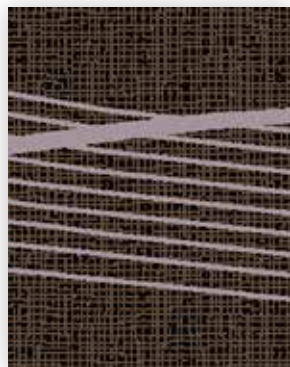


CHR 2873

R: ▶ 975 mm ▲ 975 mm



1 2



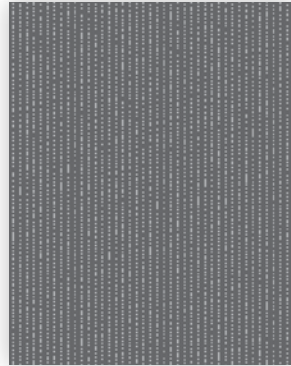
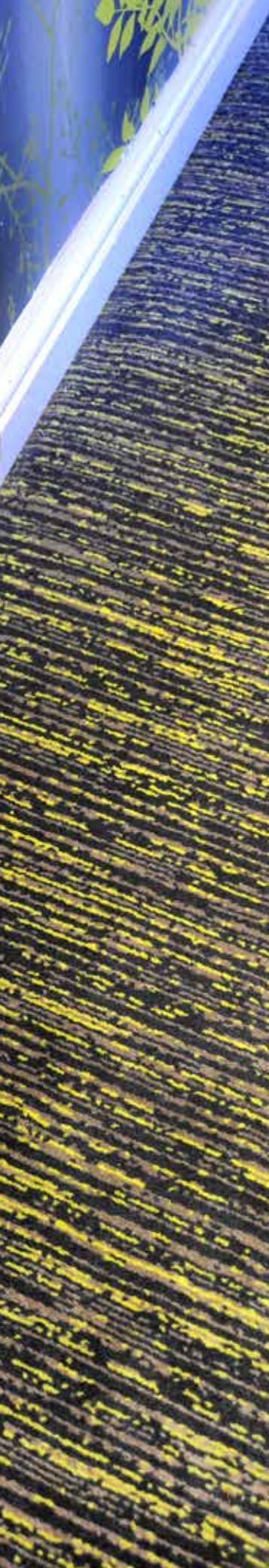
CHR 2919-KL2

R: ▶ 500 mm ▲ 580 mm



1 2 3 4

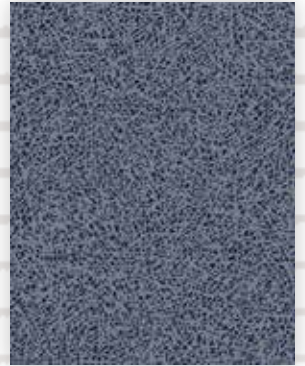




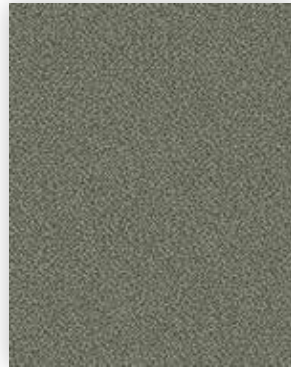
CHR 2966
R: ▶ 975 mm ▲ 975 mm



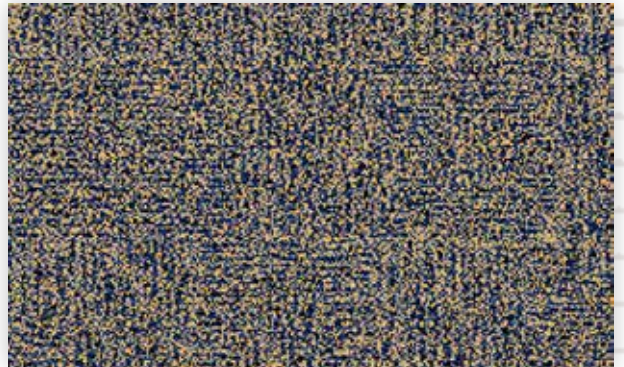
CHR 3068
R: ▶ 243 mm ▲ 243 mm



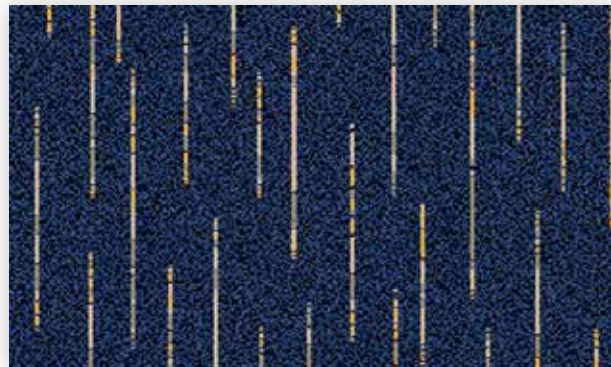
CHR 2795
R: ▶ 780 mm ▲ 890 mm



CHR 2770
R: ▶ 920 mm ▲ 720 mm






CHR 2802
R: ▶ 975 mm ▲ 975 mm



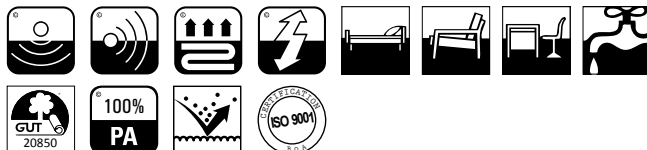
CHR 2801
R: ▶ 975 mm ▲ 975 mm






BREZINA 710 g/m²

<p>Fabricagemethode Technique de fabrication Manufacturing process Herstellungssart Tecnica di fabbricazione</p> <p>tufted, 1/10" cut pile</p>	<p>Poolsamenstelling Nature du velours Pile composition Polmaterial Composizione felpa</p> <p>PA</p>	<p>Tuftdoek Premier dossier Primary backing Trägermaterial Tela di supporto</p> <p>non woven</p>	<p>Rugtype Envers Secondary backing Rücken Sottofondo</p> <p>SB/FS</p>
<p>Totale dikte Hauteur totale Total height Gesamthöhe Spessore totale</p> <p>± 7,5 mm</p>	<p>Nuttige poolhoogte Hauteur de velours utile Effective pile height Tatsächliche Florhöhe Spessore felpa utile</p> <p>± 5,5 mm</p>	<p>Breedte Largeur Width Breite Altezza</p> <p>± 400 cm</p>	<p>Aantal noppen/m² Nombre de points/m² Number of knots/sqm Noppenzahl/m² Numero di punti/mq</p> <p>± 252160</p>
<p>Poolinzetgewicht/m² Poids mis en oeuvre/m² Pile weight/sqm Poleinsatzgewicht/m² Peso felpa/mq</p> <p>± 710 gr</p>	<p>Totaal gewicht/m² Poids total/m² Total weight/sqm Poleinsatzgewicht/m² Peso totale/mq</p> <p>± 1870 gr</p>	<p>EN 13501-1 Brandgedrag Comportement au feu Fire behaviour Brennverhalten Reazione al fuoco</p> <p>B_{fl}-s1</p>	<p>EN 1307-2004 Classificatie Classification Classification Klassifizierung Classificazione</p> <p>Class 33 Commercial Heavy</p>
<p>ISO 140/8 1997 Contactgeluidsisolatie Isolation aux bruits d'impact Impact sound insulation Trittschallverbesserungsmaß Miglioramento acustico</p> <p>± 25 dB</p>	<p>ISO 354 Geluidsdempingsvermogen α_s Absorption phonique α_s Sound absorption α_s Schallabsorptionsgrad α_s Grado d'assorbimento acustico α_s</p> <p>± 0,26 1000 Hz</p>	<p>ISO 11654 Geluidsdempingsvermogen α_w Absorption phonique α_w Sound absorption α_w Schallabsorptionsgrad α_w Grado d'assorbimento acustico α_w</p> <p>± 0,20</p>	<p>DIN 52612 Warmtedoorlaatweerstand Résistivité thermique Thermal retention Wärmedurchlaßwiderstand Resistenza termica</p> <p>± 0,079 m²/kW</p>
<p>TOG rating</p> <p>± 0,79</p>	<p>ISO 6356 2000 Teil 2: Permanent antistatisch Antistatique permanente Permanently antistatic Permanent antistatisch Antistatico permanente</p> <p>< 2 kV</p>	<p>ISO 6356 2000 Teil 6: Oppervlakteweerstand RoT Résistance horizontale RoT Surface resistance RoT Oberflächenwiderstand RoT Resistenza in superficie Rot</p> <p>≤ 10¹⁰ Ω</p>	<p>ISO 10965 1999 Teil 6: Doorgangswaerstand RdT Résistance transversale RdT Vertical resistance RdT Durchgangswiderstand RdT Resistenza ai passaggi RdT</p> <p>≤ 10¹¹ Ω</p>
<p>ISO 105 B02 2000 Lichtechtheid Solidité à la lumière Lightfastness Lichtechtheid Solidità colori alla luce</p> <p>≥ 5</p>	<p>ISO 105 E01 2002 Waterechtheid verkleuring Solidité à l'eau changement couleur Waterfastness change in colour Wasserechtheit Änderung der Farbe Solidità colori all'acqua cambio colore</p> <p>≥ 4</p>	<p>ISO 105 E01 2002 Waterechtheid uitbloeding Solidité à l'eau dégorgement Waterfastness staining Wasserechtheit anbluten Solidità colori all'acqua sfumatura colore</p> <p>≥ 4</p>	<p>ISO 105 X12 2001 Wrijftechtheid droog Solidité au frottement sec Rubbingfastness dry Reibungechtheit trocken Solidità colori allo sfregamento a secco</p> <p>≥ 4</p>
<p>ISO 105 X12 2001 Wrijftechtheid nat Solidité au frottement humide Rubbingfastness wet Reibungechtheit nass Solidità colori allo sfregamento umido</p> <p>≥ 4</p>	<p>Ce produit s'inscrit dans la démarche HQE (F.D.E.S. selon la norme NF P01-10 disponible sur demande). F.D.E.S. = fiche de données environnementales et sanitaires.</p>		
			
			

(±) These details are approximate. Complete specification details and associated certificates together with tolerances applying to the above can be provided upon request. We reserve the right to improve technical specifications without prior notice. Due to method of manufacture perfect pattern and/or colour matching cannot be guaranteed. In cut-pile carpeting, in rare cases, shading/pile reversal may occur without affecting its fitness for use. Shading/pile reversal can not be considered as a manufacturing or a material defect and will not affect the durability of the carpet. For other languages see: www.lano.com

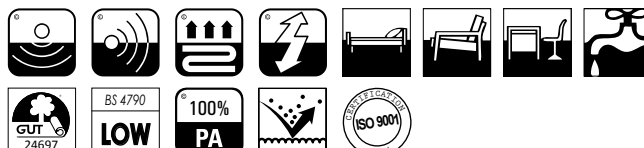
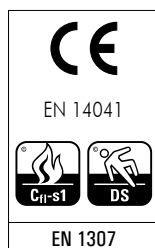


ZENITH 970 g/m²




Fabricagemethode Technique de fabrication Manufacturing process Herstellungsort Tecnica di fabbricazione tufted, 1/10" saxony	Poolsamenstelling Nature du velours Pile composition Polmaterial Composizione felpa PA	Tuftdoek Premier dossier Primary backing Trägermaterial Tela di supporto non woven	Rugtype Envers Secondary backing Rücken Sottofondo SB/FS	
Totale dikte Hauteur totale Total height Gesamthöhe Spessore totale ± 7,0 mm	Nuttige poolhoogte Hauteur de velours utile Effective pile height Tatsächliche Florhöhe Spessore felpa utile ± 4,5 mm	Breedte Largeur Width Breite Altezza ± 400 cm	Aantal noppen/m ² Nombre de knots/m ² Number of knots/sqm Noppenzahl/m ² Numero di punti/mq ± 204880	
Poolinzetgewicht/m ² Poids mis en oeuvre/m ² Pile weight/sqm Poleinsatzgewicht/m ² Peso felpa/mq ± 970 gr	Totaal gewicht/m ² Poids total/m ² Total weight/sqm Poleinsatzgewicht/m ² Peso totale/mq ± 2130 gr	EN 13501-1 Brandgedrag Comportement au feu Fire behaviour Brennverhalten Reazione al fuoco C_{fl}-s1	EN 1307-2004 Classificatie Classification Classification Klassifizierung Classificazione Class 23 Domestic Heavy Class 32 Commercial General	
ISO 140/8 1997 Contactgeluidsisolatie Isolation aux bruits d'impact Impact sound insulation Trittschallverbesserungsmaß Miglioramento acustico ± 27 dB	ISO 354 Geluidsdempingsvermogen α_s Absorption phonique α_s Sound absorption α_s Schallabsorptionsgrad α_s Grado d'assorbimento acustico α_s ± 0,24 1000 Hz	ISO 11654 Geluidsdempingsvermogen α_w Absorption phonique α_w Sound absorption α_w Schallabsorptionsgrad α_w Grado d'assorbimento acustico α_w ± 0,20	DIN 52612 Warmtedoorlaatweerstand Résistivité thermique Thermal retention Wärmedurchlaßwiderstand Resistenza termica ± 0,057 m²/kW	
TOG rating ± 0,57	ISO 6356 2000 Teil 2: Permanent antistatisch Antistatique permanent Permanently antistatic Permanent antistatisch Antistatico permanente < 2 kV	ISO 6356 2000 Teil 6: Oppervlakteweerstand RoT Résistance horizontale RoT Surface resistance RoT Oberflächenwiderstand RoT Resistenza in superficie Rot ≤ 10¹⁰ Ω	ISO 10965 1999 Teil 6: Doorgangswaerstand RdT Résistance transversale RdT Vertical resistance RdT Durchgangswiderstand RdT Resistenza ai passaggi RdT ≤ 10¹⁰ Ω	
ISO 105 B02 2000 Lichtechtheid Solidité à la lumière Lightfastness Lichtechtheid Solidità colori alla luce ≥ 5	ISO 105 E01 2002 Waterechtheid verkleuring Solidité à l'eau changement couleur Waterfastness change in colour Wasserechtheit Änderung der Farbe Solidità colori all'acqua cambio colore ≥ 4-5	ISO 105 E01 2002 Waterechtheid uitbloeding Solidité à l'eau dégorgement Waterfastness staining Wasserechtheit anbluten Solidità colori all'acqua sfumatura colore ≥ 4-5	ISO 105 X12 2001 Wrijftechtheid droog Solidité au frottement sec Rubbingfastness dry Reibungechtheit trocken Solidità colori allo sfregamento a secco ≥ 4-5	
ISO 105 X12 2001 Wrijftechtheid nat Solidité au frottement humide Rubbingfastness wet Reibungechtheit nass Solidità colori allo sfregamento umido ≥ 4-5	Ce produit s'inscrit dans la démarche HQE (F.D.E.S. selon la norme NF P01-10 disponible sur demande). F.D.E.S. = fiche de données environnementales et sanitaires.			

(±) These details are approximate. Complete specification details and associated certificates together with tolerances applying to the above can be provided upon request. We reserve the right to improve technical specifications without prior notice. Due to method of manufacture perfect pattern and/or colour matching cannot be guaranteed. In cut-pile carpeting, in rare cases, shading/pile reversal may occur without affecting its fitness for use. Shading/pile reversal can not be considered as a manufacturing or a material defect and will not affect the durability of the carpet. For other languages see: www.lano.com

U₃P₃E₁C₀ 10/266

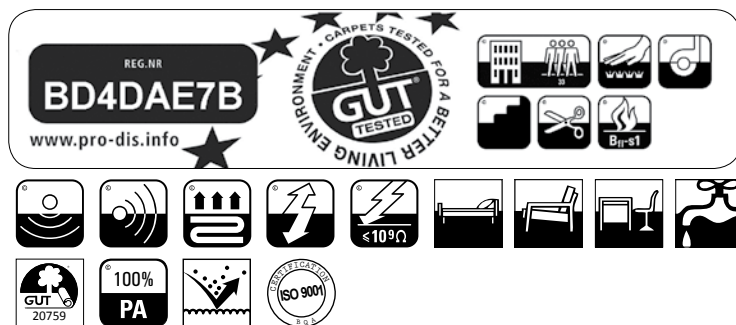


ZEN 1000 g/m²

Fabricagemethode Technique de fabrication Manufacturing process Herstellungssart Tecnica di fabbricazione tufted, 1/10" saxony	Poolsamenstelling Nature du velours Pile composition Polmaterial Composizione felpa PA	Tuftdoek Premier dossier Primary backing Trägermaterial Tela di supporto non woven	Rugtype Envers Secondary backing Rücken Sottofondo SB/FS	
Totale dikte Hauteur totale Total height Gesamthöhe Spessore totale ± 8,5 mm	Nuttige poolhoogte Hauteur de velours utile Effective pile height Tatsächliche Florhöhe Spessore felpa utile ± 6,0 mm	Breedte Largeur Width Breite Altezza ± 400 cm	Aantal noppen/m ² Nombre de knots/m ² Number of knots/sqm Noppenzahl/m ² Numero di punti/mq ± 200940	
Poolinzetgewicht/m ² Poids mis en oeuvre/m ² Pile weight/sqm Poleinsatzgewicht/m ² Peso felpa/mq ± 1000 gr	Totaal gewicht/m ² Poids total/m ² Total weight/sqm Poleinsatzgewicht/m ² Peso totale/mq ± 2160 gr	EN 13501-1 Brandgedrag Comportement au feu Fire behaviour Brennverhalten Reazione al fuoco B_{fl}-s1	EN 1307-2004 Classificatie Classification Classification Klassifizierung Classificazione Class 33 Commercial Heavy	
ISO 140/8 1997 Contactgeluidsisolatie Isolation aux bruits d'impact Impact sound insulation Trittschallverbesserungsmaß Miglioramento acustico ± 28 dB	ISO 354 Geluidsdempingsvermogen α_s Absorption phonique α_s Sound absorption α_s Schallabsorptionsgrad α_s Grado d'assorbimento acustico α_s ± 0,30 1000 Hz	ISO 11654 Geluidsdempingsvermogen α_w Absorption phonique α_w Sound absorption α_w Schallabsorptionsgrad α_w Grado d'assorbimento acustico α_w ± 0,25	DIN 52612 Warmtedoorlaatweerstand Résistivité thermique Thermal retention Wärmedurchlaßwiderstand Resistenza termica ± 0,052 m²/kW	
TOG rating ± 0,52	ISO 6356 2000 Teil 2: Permanent antistatisch Antistatique permanent Permanently antistatic Permanent antistatisch Antistatico permanente < 2 kV	ISO 6356 2000 Teil 6: Oppervlakteweerstand RoT Résistance horizontale RoT Surface resistance RoT Oberflächenwiderstand RoT Resistenza in superficie Rot ≤ 10⁹ Ω	ISO 10965 1999 Teil 6: Doorgangswaerstand RdT Résistance transversale RdT Vertical resistance RdT Durchgangswiderstand RdT Resistenza ai passaggi RdT ≤ 10⁹ Ω	
ISO 105 B02 2000 Lichtechtheid Solidité à la lumière Lightfastness Lichtechtheid Solidità colori alla luce ≥ 5-6	ISO 105 E01 2002 Waterrechtheid verkleuring Solidité à l'eau changement couleur Waterfastness change in colour Wasserechtheit Änderung der Farbe Solidità colori all'acqua cambio colore ≥ 4	ISO 105 E01 2002 Waterrechtheid uitbloeding Solidité à l'eau dégorgement Waterfastness staining Wasserechtheit anbluten Solidità colori all'acqua sfumatura colore ≥ 3-4	ISO 105 X12 2001 Wrijftechtheid droog Solidité au frottement sec Rubbingfastness dry Reibungechtheit trocken Solidità colori allo sfregamento a secco ≥ 4	
ISO 105 X12 2001 Wrijftechtheid nat Solidité au frottement humide Rubbingfastness wet Reibungechtheit nass Solidità colori allo sfregamento umido ≥ 4	Ce produit s'inscrit dans la démarche HQE (F.D.E.S. selon la norme NF P01-10 disponible sur demande). F.D.E.S. = fiche de données environnementales et sanitaires.			

(±) These details are approximate. Complete specification details and associated certificates together with tolerances applying to the above can be provided upon request. We reserve the right to improve technical specifications without prior notice. Due to method of manufacture perfect pattern and/or colour matching cannot be guaranteed. In cut-pile carpeting, in rare cases, shading/pile reversal may occur without affecting its fitness for use. Shading/pile reversal can not be considered as a manufacturing or a material defect and will not affect the durability of the carpet. For other languages see: www.lano.com

U_{3s}P_{3E}C₀ 12/291



ZEN ELITE 1200 g/m²

Fabricagemethode Technique de fabrication Manufacturing process Herstellungsort Tecnica di fabbricazione tufted, 1/10" saxony	Poolsamenstelling Nature du velours Pile composition Polmaterial Composizione felpa PA	Tuftdoek Premier dossier Primary backing Trägermaterial Tela di supporto non woven	Rugtype Envers Secondary backing Rücken Sottofondo SB/FS
Totale dikte Hauteur totale Total height Gesamthöhe Spessore totale ± 9,0 mm	Nuttige poolhoogte Hauteur de velours utile Effective pile height Tatsächliche Florhöhe Spessore felpa utile ± 7,0 mm	Breedte Largeur Width Breite Altezza ± 400 cm	Aantal noppen/m ² Nombre de knots/m ² Number of knots/sqm Noppenzahl/m ² Numero di punti/mq ± 216700
Poolinzetgewicht/m ² Poids mis en oeuvre/m ² Pile weight/sqm Poleinsatzgewicht/m ² Peso felpa/mq ± 1200 gr	Totaal gewicht/m ² Poids total/m ² Total weight/sqm Poleinsatzgewicht/m ² Peso totale/mq ± 2270 gr	EN 13501-1 Brandgedrag Comportement au feu Fire behaviour Brennverhalten Reazione al fuoco B_{fl}-s1	EN 1307-2004 Classificatie Classification Classification Klassifizierung Classificazione Class 33 Commercial Heavy
ISO 140/8 1997 Contactgeluidsisolatie Isolation aux bruits d'impact Impact sound insulation Trittschallverbesserungsmaß Miglioramento acustico ± 29 dB	ISO 354 Geluidsdempingsvermogen α_s Absorption phonique α_s Sound absorption α_s Schallabsorptionsgrad α_s Grado d'assorbimento acustico α_s ± 0,27 1000 Hz	ISO 11654 Geluidsdempingsvermogen α_w Absorption phonique α_w Sound absorption α_w Schallabsorptionsgrad α_w Grado d'assorbimento acustico α_w ± 0,20	DIN 52612 Warmtedoorlaatweerstand Résistivité thermique Thermal retention Wärmedurchlaßwiderstand Resistenza termica ± 0,051 m²/kW
TOG rating ± 0,51	ISO 6356 2000 Teil 2: Permanent antistatisch Antistatique permanente Permanently antistatic Permanent antistatisch Antistatico permanente < 2 kV	ISO 6356 2000 Teil 6: Oppervlakteweerstand RoT Résistance horizontale RoT Surface resistance RoT Oberflächenwiderstand RoT Resistenza in superficie Rot ≤ 10⁹ Ω	ISO 10965 1999 Teil 6: Doorgangswaerstand RdT Résistance transversale RdT Vertical resistance RdT Durchgangswiderstand RdT Resistenza ai passaggi RdT ≤ 10⁹ Ω
ISO 105 B02 2000 Lichtechtheid Solidité à la lumière Lightfastness Lichtechtheid Solidità colori alla luce ≥ 5-6	ISO 105 E01 2002 Waterechtheid verkleuring Solidité à l'eau changement couleur Waterfastness change in colour Wasserechtheit Änderung der Farbe Solidità colori all'acqua cambio colore ≥ 4	ISO 105 E01 2002 Waterechtheid uitbloeding Solidité à l'eau dégorgeement Waterfastness staining Wasserechtheit anbluten Solidità colori all'acqua sfumatura colore ≥ 3-4	ISO 105 X12 2001 Wrijftechtheid droog Solidité au frottement sec Rubbingfastness dry Reibungechtheit trocken Solidità colori allo sfregamento a secco ≥ 4
ISO 105 X12 2001 Wrijftechtheid nat Solidité au frottement humide Rubbingfastness wet Reibungechtheit nass Solidità colori allo sfregamento umido ≥ 4	Ce produit s'inscrit dans la démarche HQE (F.D.E.S. selon la norme NF P01-10 disponible sur demande). F.D.E.S. = fiche de données environnementales et sanitaires. HQE	REACH The new EU chemicals legislation	EMISSIONS DANS L'AIR INTÉRIEUR

(±) These details are approximate. Complete specification details and associated certificates together with tolerances applying to the above can be provided upon request. We reserve the right to improve technical specifications without prior notice. Due to method of manufacture perfect pattern and/or colour matching cannot be guaranteed. In cut-pile carpeting, in rare cases, shading/pile reversal may occur without affecting its fitness for use. Shading/pile reversal can not be considered as a manufacturing or a material defect and will not affect the durability of the carpet. For other languages see: www.lano.com



LANO

Flooring Solutions!

Zuidstraat 44 - B-8530 Harelbeke
t +32 56 65 40 00 - f +32 56 65 40 09
marketing@lano.be - www.lano.com